

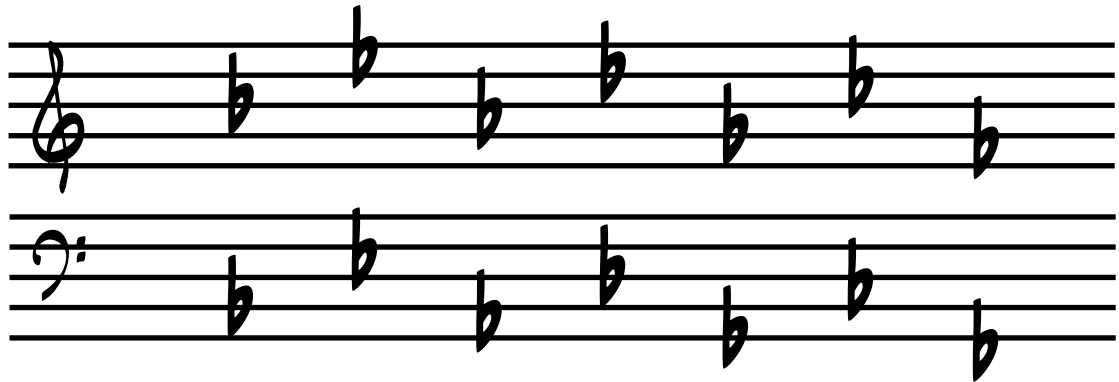
## MAJOR AND MINOR KEY SIGNATURES AND ORDER OF FLATS AND SHARPS

MAJOR KEY - F B<sup>b</sup> E<sup>b</sup> A<sup>b</sup> D<sup>b</sup> G<sup>b</sup> C<sup>b</sup>

MINOR KEY - D G C F B<sup>b</sup> E<sup>b</sup> A<sup>b</sup>

---

ORDER OF FLATS - B<sup>b</sup> E<sup>b</sup> A<sup>b</sup> D<sup>b</sup> G<sup>b</sup> C<sup>b</sup> F<sup>b</sup>



MAJOR KEY - G D A E B F<sup>#</sup> C<sup>#</sup>

MINOR KEY - E B F<sup>#</sup> C<sup>#</sup> G<sup>#</sup> D<sup>#</sup> A<sup>#</sup>

---

ORDER OF SHARPS - F<sup>#</sup> C<sup>#</sup> G<sup>#</sup> D<sup>#</sup> A<sup>#</sup> E<sup>#</sup> B<sup>#</sup>



### Notes:

- The order in which flats are added to key signatures is the reverse to that in which sharps are added. One way to remember the order of sharps is — Fat Cats Go Down And Eat Breakfast.
- Remembering the order is essential if you hope to identify the key correctly. Knowing whether the key is (for example) "A" or "A flat" depends on the flats or sharps already in the key signature.